



# Graduate Center Newsletter

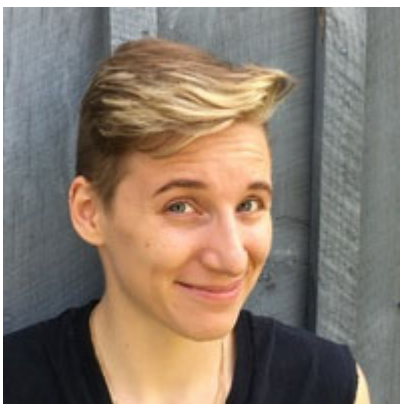
## Intersections of Inquiry and Innovation

Issue 2, January 27, 2017

The Graduate Center is a nexus of resources, people, and ideas. It is a clearinghouse of best practices and professional development opportunities across campus. It also provides programs that enable graduate students to forge coalitions among communities and disciplines while strengthening their professional preparation. Like much of graduate education, the Center is a site of intersections and collaborations. This issue of the Graduate Center newsletter is about numerous intersections across campus, throughout the nation, and around the globe. Whether restructuring the ways developing countries obtain food, water, and energy— as you can learn about in our Interdisciplinary Collaborations Series this spring— or promoting inclusiveness and diversity in the classroom, the best researchers and teachers are those who make connections. Read on to learn of ways the Graduate Center is bringing together resources, people, and ideas that help us understand the past, enrich the present, and build the future.



Andrew Carnie  
Dean, Graduate College



### Blazing their own path

First enrolled as a pre-med neuroscience student, University Fellow **Mel Ferrara** changed to Women and Gender Studies in their sophomore year and has blazed a new path of graduate research and advocacy while remaining connected with their scientific roots. Mel was recently awarded a prestigious Point Scholarship in recognition of their accomplishments. In our feature interview, Mel talks with Terry Pitt-Brooke about their story, their research interests, and their plans for the future. To read the full article, [click here](#).

### Upcoming UA Events for Graduate Students &

#### Postdocs

##### Friday, January 27

4:30pm: [Interdisciplinary Collaborations Lecture Series: Creating Intersections Across Communities](#)

##### Monday, January 30

[Deadline to Enter Student Showcase](#)

2:00pm: [WSIP Writing Process Series: Strategies for Non-Evaluative Feedback](#)

##### Tuesday, January 31

10:00am: [WSIP Special Writing Projects Series: Best Practices for Writing Article and Book Reviews](#)

12:00pm: [Faculty Job Applications Brown Bag Series: Developing Your Teaching Statement](#)

2:00pm: [Think Tank Graduate](#)



## Intersections of Diversity and Excellence

Graduate Center writer Terry Pitt-Brooke converses with campus leaders and experts about the advantages of diversity and inclusiveness. From the Graduate Diversity Programs Director, **Donna Treloar**, the Vice Provost for Inclusive Excellence, **Jesús Treviño**, and many others, he learns why the university's rich array of world views and ways of understanding benefit all the communities with which it intersects. To read the full article, [click here](#).



## Connecting People, Ideas, and Resources

The Graduate Center's **Interdisciplinary Collaborations Lecture Series** begins Friday, January 27, 4:30 to 5:30 PM, in the Student Union Kachina Lounge (all lectures to take place Fridays at the same time and place). Professor Ellen McMahon and Eric Magrane will present *Creating Intersections Across Communities: Institute of the Environment's Arts, Environment and Humanities Network*. Throughout the series, attendees will share the experience and

### Thursday, February 2

11:00am: [Stress Management for Graduating Grad Students Session 1](#)

2:30 pm: [ABD to PhD Writing Workshop Series: Integrating Sources in Your Literature Review](#)

### Friday, February 3

9:00am: [Graduate Writing Oasis at the Office of Student Engagement](#)

12:00pm: [Grad Slam Info Session](#)

4:30pm: [Effective Interviewing in Multiple Career Pathways for Grad Students and Postdocs](#)

5:00pm: [GPSC Social - Happy Hour @ Gentle Ben's](#)

### Monday, February 6

2:00pm: [WSIP Career Readiness Series: Research Interest Statements](#)

### Tuesday, February 7

Alan Alda Center Science Communication Workshops Session 1, Day 1

12:00pm: [Faculty Job Applications Brown Bag Series: Writing Diversity Statements](#)

2:00pm: [Think Tank Graduate Student Workshop: Stress Management Strategies](#)

### Wednesday, February 8

Alan Alda Center Science Communication Workshops Session 1, Day 2

10:00am: [WSIP Research & Citation Basics Series: Intro to Citation Resources](#)

12:00pm: [Graduate Writing Oasis at WSIP Office](#)

### Thursday, February 9

Alan Alda Center Science Communication Workshops Session 2, Day 1

9:00am: [Grad Slam Info Session](#)

2:00pm: RCR - [Building Productive and Ethical Mentoring Relationships](#)

### Friday, February 10:

[Grad Slam Registration Deadline](#)

Alan Alda Center Science Communication Workshops Session 2, Day 2

10:30am: RCR - [Intro to the Responsible Conduct of](#)

to discussing their innovative projects and synergies, experts will address best practices for creating, building, and maintaining collaborative initiatives. To read the full article, [click here](#).



THE UNIVERSITY OF ARIZONA  
GRADUATE COLLEGE

Graduate Center

## What is the Graduate Center?

Just over two years old, The Graduate Center forges connections across campus and in the community to enrich graduate education beyond the traditional classroom and research experience. The mission of the Graduate Center is to support the next generation of researchers, academic professionals, and leaders by building opportunities for professional development and mentoring as well as fostering interdisciplinary research, innovative collaboration, networking, and engagement with diverse communities. To learn about the Center's partners, activities, and growth, [click here](#).

[Series: Strategies for Improving Organization and Content](#)

3:00pm: [Education and](#)

[Nonprofit Career Fair](#)

5:00pm: [Grad Slam Workshop](#)

**Tuesday, February 14**

12:00pm: [Faculty Job](#)

[Applications Brown Bag](#)

[Series: Developing Your](#)

[Teaching Statement](#)

2:00pm: [Think Tank Graduate](#)

[Student Workshop: Graduate](#)

[Writing Success - Quick Tips](#)

[and Resources](#)

3:00pm: [Ask an Expert Series](#)

[- 10-min. Career Advice Online](#)

[Sessions](#)

**Wednesday, February 15**

10:00am: [WSIP Special](#)

[Writing Projects Series: Best](#)

[Practices for Writing Online](#)

[Discussion Posts](#)

**Thursday, February 16**

12:00pm: [Grad Slam](#)

[Workshop](#)

**Friday, February 17**

4:30pm: [Interdisciplinary](#)

[Collaborations Lecture Series:](#)

[Mobilizing Creativity and](#)

[Expertise for Change](#)

**Monday, February 20**

2:00pm: [WSIP Career](#)

[Readiness Series: Diversity](#)

[Statements and Teaching](#)

[Philosophies](#)

5:00pm: [Grad Slam Workshop](#)

**Tuesday, February 21**

12:00pm: [Faculty Job](#)

[Applications Workshop Series:](#)

[Developing An Application-](#)

[ready Course Syllabus](#)

2:00pm: [Think Tank Graduate](#)

[Student Workshop: Manage](#)

[Your Citations with EndNote](#)

**Wednesday, February 22**

9:00am: [Student Showcase](#)

10:00am: [WSIP Research &](#)

[Citation Basics Series:](#)

[Integrating Sources Effectively](#)

3:00pm: The Art of Giving

Feedback that Matters, BIO5,

Room 103

**Thursday, February 23**

12:00pm: [Grad Slam](#)

[Workshop](#)

2:00pm: [RCR - The Ethics of](#)

[Authorship and Publication](#)

5:00pm: GPSC Social - Happy

Hour @ Gentle Ben's

**Monday, February 27**

5:00pm: [Grad Slam Workshop](#)

**Tuesday, February 28**

2:00pm: [Think Tank Graduate Student Workshop: Comprehending Comps - Strategies for Success](#)

**Wednesday, March 1**

2:00: [WSIP Special Writing Projects Series: Best Practices for Writing Position Papers](#)

**Thursday, March 2**

[GCC PhD & Masters Virtual Career Fair](#)

12:00pm: [Grad Slam Workshop](#)

2:30pm: [ABD to PhD Writing Workshop Series: Revising Grammar and Style](#)

**Friday, March 3**

9:00am: [Graduate Writing Oasis at the Office of Student Engagement](#)

**Monday, March 6**

2:00pm: [WSIP Career Readiness Series: Résumés & CVs](#)

5:00pm: [Grad Slam Workshop](#)

**Tuesday, March 7**

10:30am: [RCR - Data Management, Acquisition, and Ownership](#)

11:00am: [Spring Career Days](#)

2:00pm: [Think Tank Graduate Student Workshop: Making Your Data Work for You](#)

4:00pm: [Career Services' Diverse Workplaces Networking Reception](#)

**Wednesday, March 8**

10:00am: [WSIP Research & Citation Basics Series: Hands-On Practice with Citation Formatting](#)

11:00am: [Spring Career Days](#)

12:00pm: [Graduate Writing Oasis at WSIP Office](#)

**Thursday, March 9**

12:00pm: [Grad Slam Workshop](#)

**Wednesday, March 15**

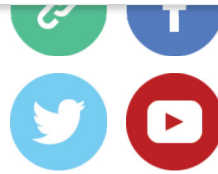
12:00pm: [Ask an Expert Series: 10-Minute Career Advice Online Sessions](#)

For a full calendar of events related to professional development opportunities, visit the [Graduate Center calendar](#).

**Subscribe**

**Past Issues**

**Translate** ▼



*Copyright © 2017 University of Arizona Graduate Center , All rights reserved.*